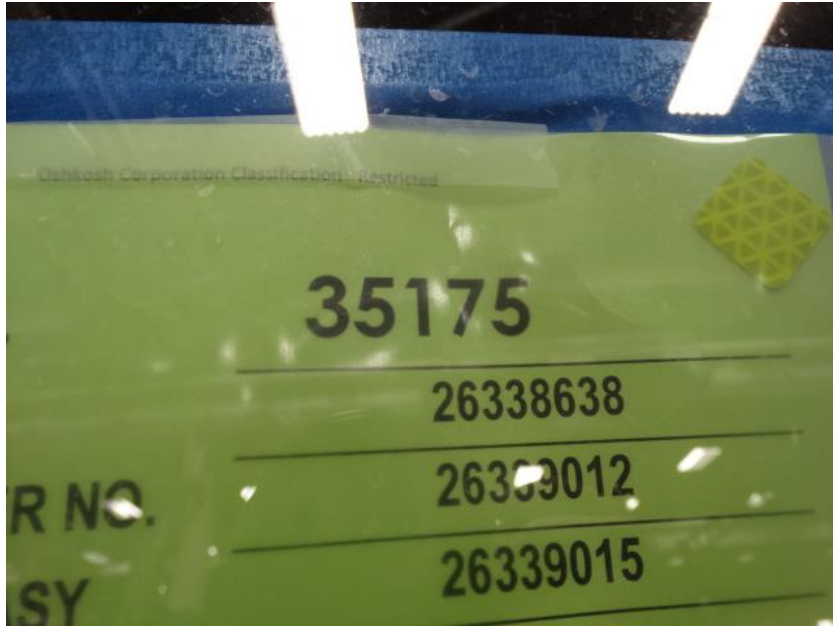


Photo Album for Enfield Fire District, CT Job 35175 February 26, 2021

In this report your apparatus started final assembly. In your next report the apparatus may continue final assembly.





DSC06162



DSC06163



DSC06164



DSC06165



DSC06166



DSC06167



DSC06168



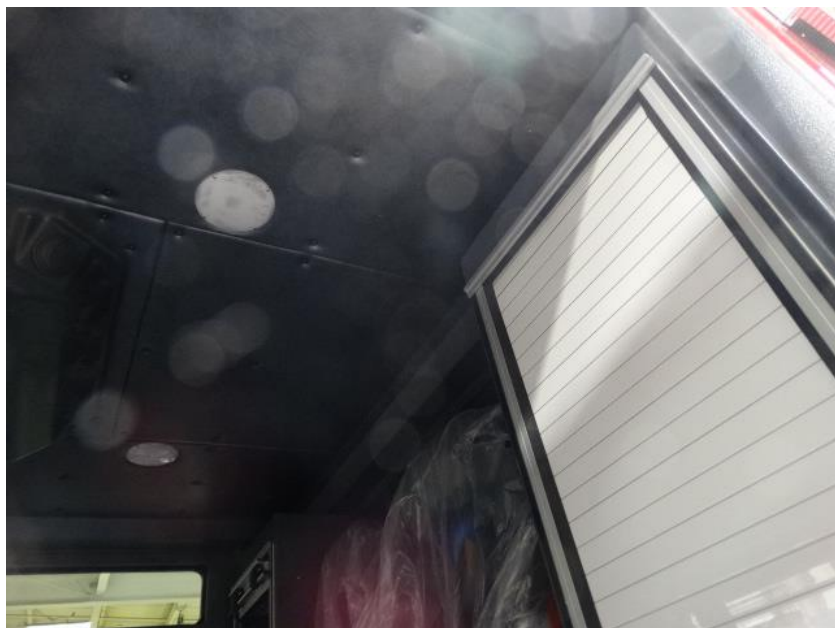
DSC06169



DSC06170



DSC06171



DSC06172



DSC06173



DSC06174



DSC06175



DSC06176



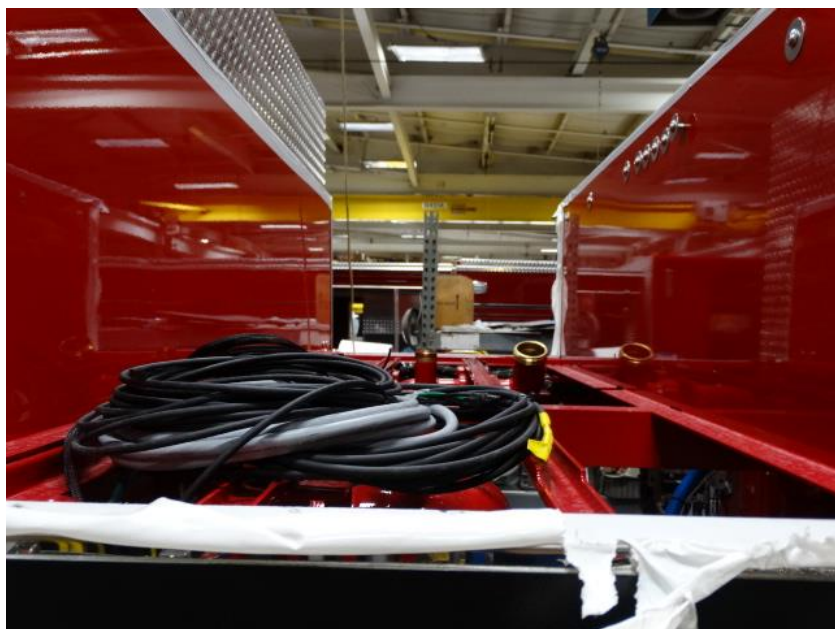
DSC06177



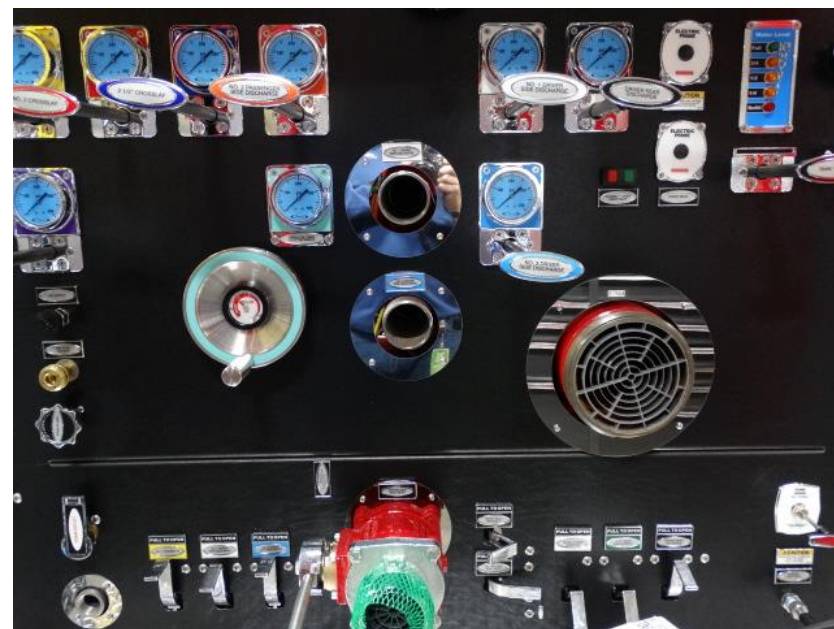
DSC06178



DSC06179



DSC06180



DSC06181



DSC06182



DSC06183



DSC06184



DSC06185



DSC06186



DSC06187



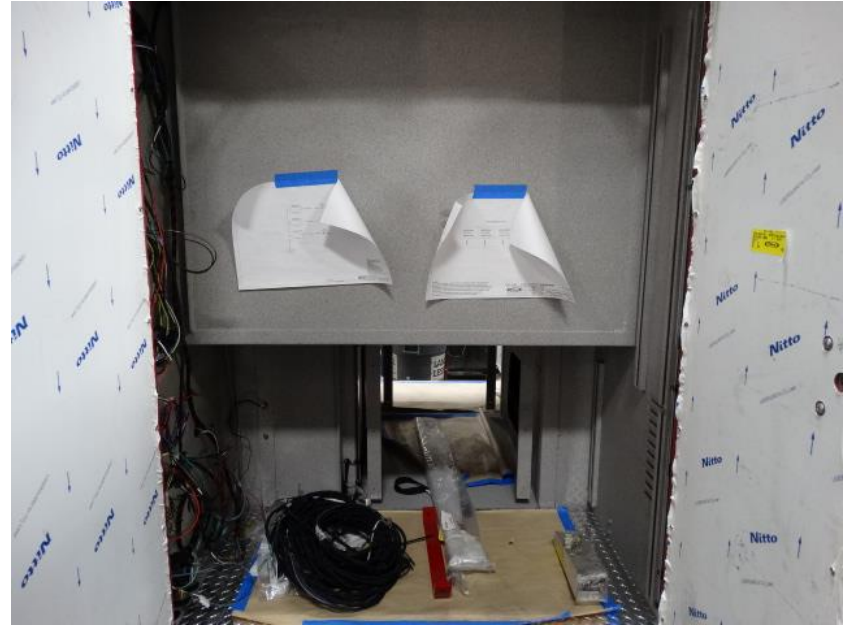
DSC06188



DSC06189



DSC06190



DSC06191



DSC06192



DSC06193



DSC06194



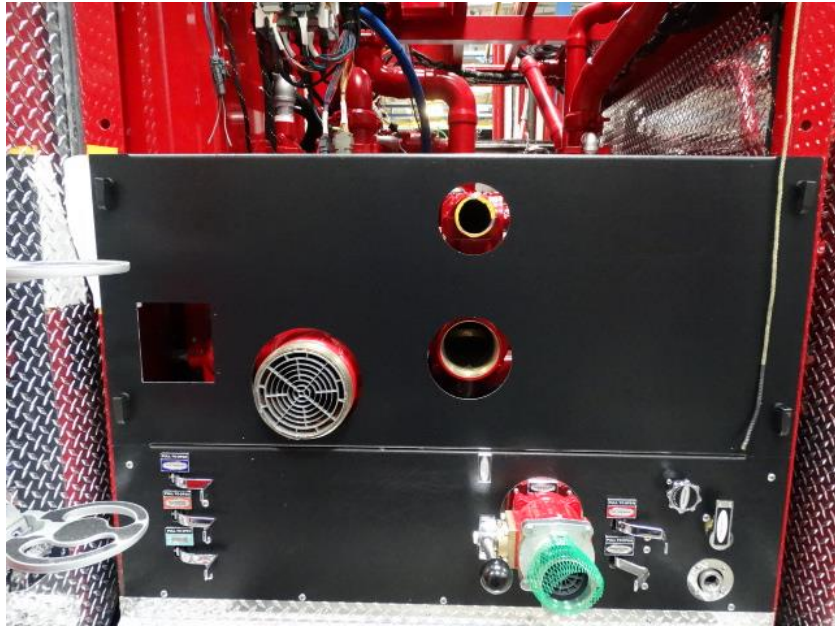
DSC06195



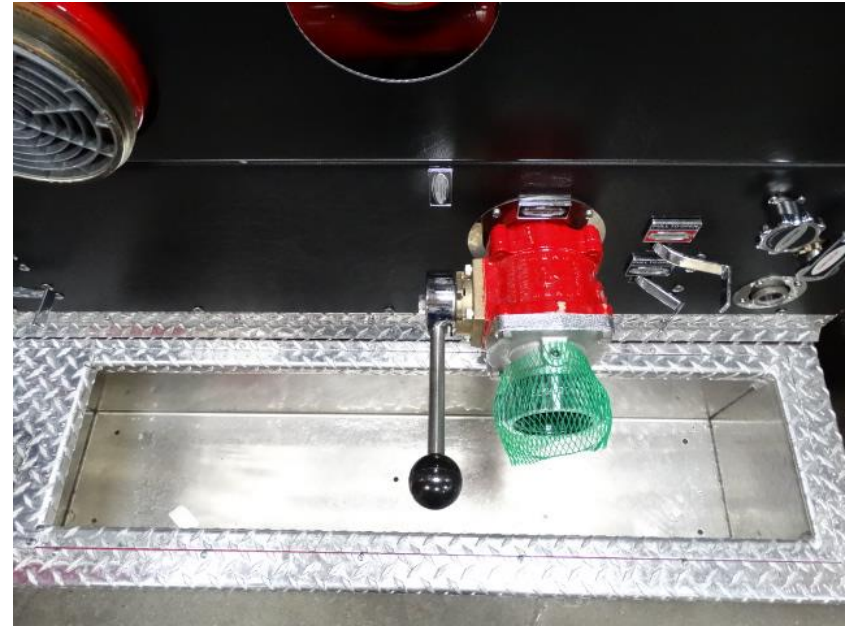
DSC06196



DSC06197



DSC06198



DSC06199



DSC06200



DSC06201



DSC06202



DSC06203



DSC06204



DSC06205



DSC06206



DSC06207



DSC06208



DSC06209



DSC06210



DSC06211



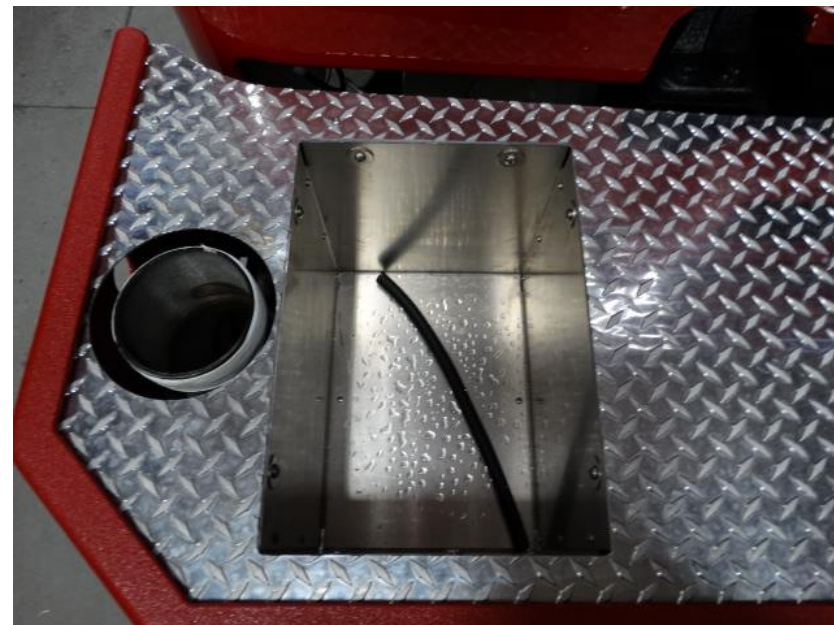
DSC06212



DSC06213



DSC06214



DSC06215



DSC06216



DSC06217



Firematic

SUPPLY COMPANY, INC

www.Firematic.com



An Oshkosh Corporation Company



Your Vision to Quality & Safety



©2005- 2021 Fire & Safety Consulting, LLC
Neenah, Wisconsin 54956